

## Pilgrimage Shrines:

### **The Shrine of St. Thomas**

#### **Location: Canterbury Cathedral**

The Shrine of St. Thomas contained the remains of Archbishop Thomas Becket, who was murdered in 1170 after his quarrel with King Henry II.

People who visited St. Thomas' shrine reported miraculous healing. It was the most popular and the leading shrine in England in the 13<sup>th</sup> century. Pilgrims also visited Canterbury from overseas to say that they had been to such a famous shrine.

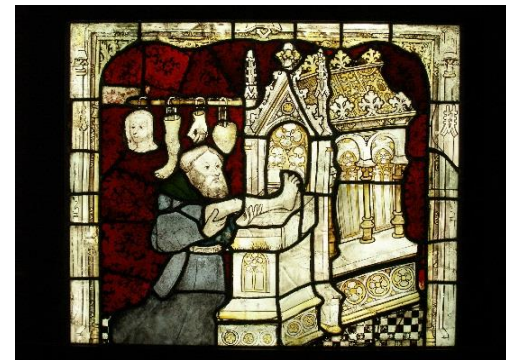


### **The Shrine of St. William**

#### **Location: York Minster**

The Shrine of St. William contained the remains for Archbishop William of York. He became a local legend when he supposedly prayed and saved hundreds of people from drowning when a bridge they were standing on collapsed.

William was made a saint and his tomb became a shrine. People travelled from both nearby and further away to pray to St. William and ask for miracles, but it was not so famous or popular as the shrine at Canterbury.



Enquiry Question: Why did Medieval People go on Pilgrimage?